

Contents

Title	Author	Page
Articles		
Bessie of the Bill	Claire Acklam	4
Burwell and Reach Community Fund		19
Burwell History Society	Susan Bluck	19
CPR and Defibrillator Awareness Training	James Loftus	10
Dyke's End Beer Festival	Dan and Ruth	9
Prior Fen Chapel		19
Swaffham Prior Parochial Charities	Pam Waters	19
Anglesey Abbey	Issy Vetoshkina	15
Bottisham and Burwell Photographic Club	Daphne Hanson	6
Burwell and Reach Car Scheme	Pam King	18
Burwell Museum		20
Burwell Surgery Patient Participation Group		15
Bus Timetable		27
Church Letter from the Vicarage	Eleanor Williams	17
Church Services	Eleanor Williams	27
Contact Information		28
Council – District Councillors		22
Council – Parish Councillors		22
Council - Parish Meetings Minutes		24
Diary Dates		27
Food Focus	Catherine Gibson	16
Mobile Library		3
Nature in Reach	Nick Acklam	12
Rosanna's Ramblings	Rosanna Moseley Gore	7
Sport and Recreation		
Cricket Report	Ross Clark	10
Football Report	Nathan Bridgeman	11
Reach Riders	Sue Cameron	7
Tales from a Reach Garden	Danuta Gibson	21
Then and Now	Chris Patterson	28
Village Hall	David Thomas and Sue Elliott	5 and 6
Village Update	Alex de Giorgio-Miller	3
Wicken Fen	Ajay Tegala	14

From the Editor

Well, it looks like summer is over and autumn is well on its way. As I write this, its chucking it down outside and marginally chilly but, of course heating cannot go on until next month, which pleasingly starts tomorrow!



Two events that feature on the cover of this issue - and were very successful - are **Sports Day** and the village **Coffee Morning** in support of cancer charities Macmillan and Maggie's. Big thanks go to everyone who got involved!

And on **Friday 25th October**, the Friday Afternoon Sewing Group invite us all to a **Wear It Pink** afternoon tea in the **Village Hall** from **3.30pm** as part of the Breast Cancer Now awareness month. There's more information about this on the News page of the village website – and it sounds like it'll be fun!



Another event not to be missed is the **Dyke's End Beer Festival** which starts on **Wednesday 2nd October** and ends on Sunday 6th. If you go to **page 9** of this issue you'll get full details of what's going on and when.

There is also a lovely article on **page 4** written by Claire Acklam which gives us all a better understanding of what went on when the famous "**3 pups**" were found!

A do have a look at the article on **CPR and Defibrillator Awareness Training** on page 10 – and respond accordingly to James. There's also further information on this in the Parish Council Minutes for September, item 10 on page 27.

And finally, I'm busy working on the website, especially the News page which is now up to date on what's happening during the remainder of this year and I am gradually adding whatever pictures I can get hold of for past events.

David Parr

Front Cover Image courtesy of **Alex de Giorgio-Miller**

About the Magazine

The purpose of *Within Reach* is to serve the whole village by circulating information and interesting articles free to every household. Additional copies are available at a charge of £3.00. Issues are published bi-monthly covering the months of Feb/Mar, Apr/May, June/July, Aug/Sept, Oct/Nov and Dec/Jan.

Copies of *Within Reach* magazine and its predecessor *Out of Reach* can be found on the village website www.reach-village.co.uk. This magazine (which is fully funded from advertising) is printed by Burwell Print Centre, an excellent social enterprise which trains and supports adults with learning disabilities and provides high quality design and print capabilities.

The Team

Editor	David Parr
Distribution	Freda Lloyd, Claire Halpin-McDonald and Grahame Radford
Photographer	Rosanna Moseley Gore
24Acres	David Thomas
Anglesey Abbey	Issy Vetoshkina
Church	Eleanor Williams
Cookery	Catherine Gibson
Cricket	Ross Clark
Events Team	Debbie Quilter
Gardening	Danuta Gibson
Neighbourhood Watch	Kevin Evans
Reach Riders Group	Sue Cameron
Rosanna's Ramblings	Rosanna Moseley Gore
Then and Now	Chris Patterson
Village Hall	Sue Elliott
Village Matters	Alex de Giorgio-Miller
Wicken Fen	Ajay Tegala
Wildlife	Nick Acklam

Village Update

Summer has just whizzed by and now there are definite hints of autumn in the air. After the initial bump back to school, I do like this time of year – digging out my boots and thicker coats and the changing colours of the leaves. There's something very comforting about the cosy evenings and extra blankets!



Black bin bags

You should have received this year's black sack delivery of 52 bin bags. If you haven't received your bags, there is an online form you can complete on the East Cambridgeshire District Council website, or you can contact customer services on 01353 665555.

On the subject of waste

New plans have been laid out by ECDC for changes to our waste collection services to benefit residents and the environment. If approved, the council is aiming to bring in all the changes from spring 2026. Residents who receive a standard household collection will be provided with:

- Food waste: A free 5 litre kitchen caddy and a 23 litre kerbside caddy which will be collected weekly. An initial year's supply of caddy liners will be provided.
- Dry recycling: This will continue to be collected in a blue lidded 240 litre wheeled bin every two weeks. Residents will be able to add in soft plastics such as tubs, plastic bags and cling film. For households that regularly fill their blue bin, residents can put in a request to the council for a second bin free of charge.
- Green recycling: Garden waste will continue to be collected for free in a green lidded 240 litre wheeled bin every two weeks. If required, residents can put in a request to the council for a second bin free of charge.
- Rubbish: A free 180 litre black wheeled bin will be provided for any waste that can't be recycled and collected every two weeks.

Alternative services and assisted collections will continue to be provided for residents who cannot accommodate wheeled bins or have additional needs, such as those with larger families.

The proposals will go before the council's Operational Services committee on 23 September.

If approved, they are expected to save the equivalent carbon produced by travelling 3 million miles in a petrol car each year, helping the council meet its core environmental objective of creating a cleaner, greener East Cambridgeshire. A broader outline of the initial proposals is available in the council's committee report on their website.

Call for school governors

An appeal has been launched by Cambridgeshire County Council to recruit more school governors. There are around 50 vacancies that need to be filled in Cambridgeshire. Governors are crucial to help schools navigate all aspects of school life, while maintaining a focus on learning and the provision of a high-quality education. The aim is to create a waiting list of applicants, so that as vacancies come up, they can be easily filled.

School governors hold school leaders to account for the performance of the school. There is no one type of person suited to school governance and governing boards are better when they reflect the diverse communities they serve. A range of relevant training is provided to support governors in their role and make the most of everyone's commitment, so no prior experience is needed. While the staff remain the educational experts, governors ask questions about the impact of leaders' decisions and policies, scrutinise budgets and school data and help support the school through the challenges of the education landscape. With meetings, preparation and school visits, governance can take between five and eight hours per month. In return, governors become part of a thriving school community, with rewarding opportunities to develop skills and gain experience.

To become part of a Governing Body and make a positive impact on children's learning and achievement, get in touch:

<https://www.cambridgeshire.gov.uk/residents/children-and-families/schools-learning/school-governors>

Keep well and enjoy the autumnal colours!

Alex de Giorgio-Miller

Mobile Library



The mobile library visits Reach on the 3rd Tuesday of the month from 10.10 to 10.30am. This is route F16 and it parks at the Fair Green Bus Stop. They have a great selection of books for all, free NHS hearing aid batteries and walking stick ferrules. You can join Cambridgeshire Libraries on the bus if you are not already a member.

Bessie of the Bill

Incident Report, Friday August 9th 2024, 0730 hours



Morning all,

I was pounding the dawn patrol beat as usual on the morning of Friday 9th August 2024. It was not my normal patch, as my superiors had, on this particular day, decided to give me an alternative route. In my younger days, I was known for questioning their authority, but after nearly nine years, I have learnt that with age, comes experience and on most occasions, compliance leads to a more harmonious and uncomplicated life.

After about half an hour, I observed some suspicious canine activity in the distance.

"Hello, hello, hello, what's going on here?" I thought. The speed at which the three suspects were running indicated to me that they were up to NO GOOD. I have an excellent nose for a crime and primed myself for action, but my superiors told me to stand down and await further instructions.

I watched closely as, rather than following her surveillance training, my second-in-command (over-promoted and prone to impulsive decision making) burst into action. I myself thought that this was a kettling situation, but sadly, she advanced towards the suspects in a ham fisted and chaotic manner, causing them to increase their speed, scatter and attempt escape.

I feared they would all evade capture, but, just when hope seemed completely lost, two passing van drivers appeared and skillfully cut them off at Swan Lake Barns. After a slight tussle, all three were apprehended and their collars would have been felt, had they been wearing any.

They were then all taken to Holding Cell 15, where, after having mug shots and paw prints taken, they were offered Chappie and Water, which they ate and drank extremely enthusiastically.



Despite appearing to be bang to rights, all three pleaded the Fifth Amendment and remained entirely silent for the rest of the day. They did not appear either drunk or disorderly, but I adopted a zero tolerance approach to any potential misbehaviour and they gave me no trouble.

However, as time went on, I began to think that something didn't smell right (the suspects certainly didn't)! On further investigation and after contacting my reliable sources, I gathered compelling evidence which suggested to me that, rather than actually being suspects, these three were, in fact, victims of a heinous crime. I informed my superiors who thanked me for my forensic and diligent work and all three were released from their incarceration forthwith.

With the help and support of the local community, each of the three is now thriving after a truly traumatic ordeal and will, I hope, go on to live happy and paw abiding lives.

I can now close this case: my work here is done.

Signed



PC Bessie Acklam 231215
Paw Patrol
Reach Village Unit

Village Hall AGM Report

Community use of the hall

Good use has been made of the hall in the past year, for various clubs, events, elections etc. This looks set to continue and grow as opportunities are developed (by Helen Oliver and Claire Halpin) for a growing number of arts, education and health and fitness activities.

Repairs and maintenance

Towards the end of 2023 the lead roofing from the porch/entrance hall was stolen. This led to a protracted episode of obtaining quotes for repairs and negotiating with the insurers (Aviva) – much of this led by Andrew Trump. The work was finally completed with the new signage put in place in July.

The ventilation cowls on the roof are in a very poor state of repair. The ECDC Conservation Officer has confirmed that they can be removed – Ely Diocese have also consented. Quotes are being sought for this work, which will need to include repairs to the ridge tiles. At the same time, quotes are being obtained for repairs or replacement of other parts of the roof (if assessed by roofers as being needed). Quotes received so far indicate that fundraising will be needed if this work is to go ahead, and the cost will be high.

The annual fire and safety survey revealed that the emergency door lights no longer functioned effectively. These have all been replaced. Likewise, the emergency ceiling lights are in the process of being replaced, including the installation of new batteries. Work to the 'grounds' of the Village Hall have been limited to trimming of trees around the property, to remove branches overhanging the roof (the yew and the front and cherry at the rear).

Energy efficiency

The committee continues to explore improvements to the hall that will improve efficiency and move the hall towards becoming more carbon neutral. In October 2023 a report was received following a survey by the Peterborough Energy Conservation Trust. This was not very helpful however. Since then, the following is planned/underway:

- Improvements to roof insulation (awaiting decision on the re-roofing)
- Replacement of bulbs with LED energy efficient versions (work has started)
- Timer added to immersion heater to prevent it from being left on after bookings
- Replacement of oil-fired boiler. Although still functional, the boiler is old and inefficient. Various options are being explored but no decision has yet been made.

Funding, fundraising and events

Another successful cheese and wine and harvest supper event was held, organisation led by Tony Fordham.

The hall received a bequest of over £12,000 from Denis Millard. A decision on how to use this gift has not yet been made.

In partnership with other volunteers from the village, a harvest supper was held in the hall. There was good attendance – nice to see this popular institution being revived.

Website and booking system

The village hall is moving to a new integrated website, booking and on-line payment system, thanks to the work done by Andrew Trump. When completed this should help simplify management of bookings.

Policies

New village hall policies were prepared and approved on Health and Safety and on Safeguarding. These will be reviewed on an annual basis. The Fire Evacuation procedures document was also reviewed and updated.

Lease

The lease agreement with Ely Diocese for the Village Hall has only a few years to run. If there is to be considerable investment in improvements (and the associated fundraising) it would be good to have a guarantee of a longer let.

A renewal/extension of the lease has been requested but after 4 months there is still no response from the Diocese.

Committee Membership

After many years of combined service to the committee several members have stepped down due to their changed circumstances. Sue Elliot (Secretary) is moving from the village to be closer to her family, Tash Bridgeman (Bookings Manager) has a new baby and Charlotte Cane (Parish Council representative) has been elected as MP. We are grateful for all that they have contributed to the effective running of the village hall and are sorry to lose them from the committee.

The committee has been joined by Diana Greer who takes over the role of Bookings Manager and most recently by Paul Greer whose technical expertise will be invaluable as we seek to reduce the hall's carbon footprint and running costs.

Helen Oliver and Joss Goodchild have joined a volunteers group for the Village Hall, available to help out when needed and to support management of the hall with regular/routine tasks (eg putting out the bins). David Parr has volunteered to help with fundraising and is currently drafting proposals for funding for the roof repairs. The committee is still seeking new members.

David Thomas

The Village Hall Needs You!



At the VH AGM held on 19th September, David Thomas reluctantly resigned as Chair due to pressure of work but is willing to remain on the Committee. David has been a very hardworking chair, managing and communicating so effectively with local government to update our H&S policies, improve and maintain the building whilst seeking technical guidance to plan future green heating and power.

Andrew Trump will remain as Treasurer and since 2017, and heroically steered us through very tough times of uncertainty and financial ups and downs and has created a new website design and new booking systems to make bookings/payments easier for every user and to process these payments directly through to the bank.

We are greatly indebted to Diana Greer who is overseeing these bookings for now (anyone willing to help her) and who took over from Natasha Bridgeman who had been dealing alone with all the bookings, opening and closing the VH and dealing with payments and increased the bookings. Thankyou Natasha, we hope you are enjoying school!

The VH can't function without a strong committee and we are so thankful to have Tony Fordham with us and Paul Greer who recently joined with Diana. But I am leaving as Secretary having been involved for years including organising the Fair and Secretary since 2012 and need someone to record and take minutes, please??

If you look at the history of the Village Hall it is a miracle that we have been blessed with so many wonderful people who were willing to step up and give a little of their time to make things happen and without that effort and commitment this precious building will not survive into the future for use by and for the village.

Thanks to Helen and Claire we have some lovely things to enjoy through the winter months in the VH!

Sue Elliott

Bottisham and Burwell Photographic Club



We commenced our meetings after the summer recess on 10 September 2024. This was a Welcome Evening, a social celebration of last season when Cups & Trophies were presented to the award winners of our annual Print & PDI competitions.

Our programme continues during the Autumn, and some of the highlights are listed below:

September 17

'The Kingdom of the Ice Bear' by Bob Johnson, Fakenham (Zoom meeting)

October 1

Composition Masterclass by Richard Cobby ARPS CPAGB. An in-depth evening dealing with every aspect of photographic composition.

October 8

Projected Digital Image League Competition No. 1.

October 15

'Computational Photography – How Our Smartphones Are Beating the Big Cameras' by Gary Friedman (Zoom meeting).

October 29

'From Concrete to the Abstract' by Ann Miles FRPS, Cambridge.

November 5

Taken on the Club Outing – The Metcalfe Trophy. Digital images taken on the day in Norwich on 9 June 2024.

November 12

Print League Competition No. 1

November 10

'Scotland Behind the Lens' by Stephen Ball of Stephen Ball Photography.

December 3

'Living & Working in the Antarctic' by Professor Lloyd Peck, Science Leader of the British Antarctic Survey, Cambridge.

Meetings are held Tuesday evening from 7.30 pm to 9.30 pm at Swaffham Prior Village Hall High Street, Swaffham Prior, CB25 0LA (except the third Tuesday in the month an online Zoom meeting) and new members are always welcome.

Visitors can attend a lecture for a small entrance fee of £4.00, which includes refreshments. Our annual subscriptions are £55.00 for Adults, £30.00 for Students, plus a weekly attendance fee of £1, which includes refreshments.

If you would like to join us for our new season we would love to see you. A copy of our programme for 2024/2025 can be obtained from our Secretary, Debra Bennett, at secretary.bandbpc@gmail.com.

Daphne Hanson DPAGB HonPAGB
Chairman

Reach Riders

The arena has had a makeover with new posts and repairs to jumps. Thank you to Craig Dunnett for undertaking the long list of jobs !



We will be working over the winter to repaint/treat wood and put new string around the arena to get it looking super smart. There are new signs erected to help direct those who are new.

We continue to have new members joining all the time , so welcome to all. We enjoyed a social evening at the Dyke's End, a chance for members and non-members to get together and chat. The raffle was won by one of our members Julia Rogers and raised £80 so thank you to everyone who bought tickets.

Lessons continue with Lucy Tuck on a Saturday morning; these are proving very popular. As always a big thank you to Craig Reader for keeping grass/weeds under control

Sue Cameron

Rosanna's Ramblings

It has only recently occurred to me that the seasonality of walking in and around Reach isn't limited to whether the trees are bare, or green, or yellow. Whether it's cold, wet, muddy, dry, hot, humid or frosty. It's actually rather more extreme than that. There are chunks of time, weeks or months, when certain paths simply aren't available.



I don't know why this hasn't registered consciously with me before. But it goes like this. Regular readers will already know what I think about how, when it's been very wet and muddy, the wretched off-roaders render large stretches of our droves impassable, or only treacherously passable. Then the deep ruts they leave dry out and leave mini-canyons which I wouldn't even attempt to walk without a stick for fear of dramas with turned ankles or twisted knees. So far, so predictable.

I remember back in 2018, in our beloved black lab Hector's final months, I gave up doing the circuit to the cricket pitch from the river because the height of the grasses was distressingly exactly right for administering massive doses of pollen precisely to my eyes and nose. It was too threatening in hay fever season even to contemplate that walk.

But then this year I noticed that by the time the pesky pollen load had dropped, that particular path had become so overgrown that one would have needed a machete wielded at knee level to have been able to make any progress ... and if approached from the cricket pitch side, the same was true. So we stopped doing circuit walks and stuck to the much less satisfying 'there and back' ones which feel, well, a bit disappointing. Every so often, I would take a look and shake my head as I turned to retrace my steps.



Then more recently, just as the mass of vegetation has started to squash down a little and a few sturdy individuals had started the slow, then galloping, process of re-establishing a walkable path ... just as that has started to happen, another much more challenging barrier has appeared. "Appeared" isn't accurate, though. "Began its autumnal triffid march" is better. It's the brambles. Overnight great arcs of thorny growth thicker than my thumb appear and grab you as you pass. If you're not on the alert, five minutes later the same bramble could be hitting you across the face. And by the next day that arch is complete and its well on its way to diving back to the ground, ready to implant itself as the next stop on its mission for world domination.



Now, I admire brambles, I really do and I know what a wonderful safe habitat they are for wildlife when they create those giant thorny mounds. But ... but ... they don't exactly make path-based progress very easy. Milo doesn't care. This year he really has mastered the considerable doggy skill of being able to harvest his own ripe blackberries while leaving the unripe red ones behind (not bad going for a colour-blind canine). He also seems to be immune to thorns. But I have spent a lot of time while out walking him pondering on the nature of this and other kinds of entanglement.



Maybe I'm just being a bit of a wuss. After my dog induced knee injury last year, I'm unwilling to risk falling if I can help it. I don't want to trip, or stagger, or twist. I wanted to go on the 'pylon walk' a week or so ago and made as if to turn off the drove and then changed my mind when I saw the tangle of long grass and matted vegetation. Bad idea, I thought. Milo didn't care. My rethinking made it more likely he could wangle a sulphur-smelling dunk in the gault pond instead. (He did, he stank. Nothing new there).

And on the way back into the pocket park, I was struck as I have often been before by the simply amazing curlicues that the toxic but beautiful white bryony creates across the gates at both ends. Now there's a plant that makes a virtue out of entanglement, not to ensnare but to occupy a territory. I have one in my garden in Ely and if I turn my back on it, or certainly leave it for a week or two, I return to find that it is choking my pear tree, my buddleia, my verbenas bonariensis. I wish it weren't quite so charmingly and delicately lovely. I always feel a twinge of shame when, with gloved hands, I pull it out of the ground and force it to relinquish its dainty spiral grip on the plants I want to grow. But I needn't feel guilty, really – it will have resurrected itself in a week, or a month, or next spring. In the meantime, it's laughing quietly to itself, in a twisty twiny kind of way.



While Milo is off chasing muntjacs, or finding yet another revoltingly slimy abandoned tennis ball, my mind wanders sinuously. We're all so entangled, we have our own personalised world-wide webs of friends and family, obligations and responsibly. The big Out There constantly impinges on the much smaller In Here, whether we want it to or not. Our memories and experiences jump out to catch us out when we're drifting in a more or less carefree way through a moment in our lives. Nothing is without consequence, no woman is an island. The answer to the perennial question "IS THERE ANYONE OUT THERE?" is always "Well yes, actually". We are not alone.

Do such thoughts cheer me as I extract a bramble thorn from what had been an inadvisedly decent piece of clothing to have chosen for a dog walk? Not really, but on balance I reckon it's probably better to accept that we're inextricably linked, connected, entangled with the greater web of life and meaning and significance, than to wish to be hermetically sealed off from all that mess.

Rosanna Moseley-Gore

The Dyke's End Beer Festival

The Dyke's End Beer Festival 2024 is finally here and we've got a cracking selection of beer, entertainment and food for the week.

Wednesday 2nd October the beer tent opens in the front garden (beer tokens available from the bar, for use all week) and we have the tasty Azahar food van, whose wonderful Spanish cuisine went down a storm when they were last here in May.

Thursday 3rd October is our usual Pie and a Pint Night which can be combined with any beer from the festival.

Friday 4th we'll be doing our **Fish and Chip Night** combined with the music from the amazingly talented **The Light Waves**, starting at 8pm - and we've got extended licensing hours up until 12am on both Friday and Saturday night.

Saturday 5th we'll be **open for lunch** as usual from 12pm, with music kicking off at 3pm with the fiddle-playing duo **Kelly and Woolley**. Their Folk, Americana, Country and Cajun has entertained us here at the pub every time they've played here. And again, **on Saturday** we are delighted that **Pizza Mondo** will be serving their wonderful food from 3pm to 9pm. And from 7pm, one of the Dyke's End favourites **Mark Stevens** will be back to get us all singing with his eclectic mix of cover songs, all done in his laidback, fun acoustic fashion.

The Festival finishes on **Sunday 6th**.

Here are some snippets from the **Dyke's End blog** (dykesendreach.co.uk/blog), featuring brewery interviews and bios of some of our featured artists:

Brewery Feature: Moon Gazer, Norfolk



As a smaller, independent brewery, how do you compete in a market often dominated by larger, multi-brand owning breweries?

We have a simple ethos – you are only as good as your last pint – so quality and consistency is vital as well as great tasting beer. However, you also need to be part of the community – your customers are not just customers, they are part of the team and it's important they care about what you do.

Beer Fest 2024 Performer Feature: Mark Stevens



Performing: Saturday 5th October 7pm, Dyke's End Beer Festival

Mark is a Singer/Songwriter from Peterborough who specialises in acoustic rhythmic style Folk/Pop with storytelling lyrics. He's been performing for us regularly at the Dyke's End for the last two years, and has become a firm favourite amongst locals. So much so that Mark even got the prestigious gig of performing at the world-famous (well, nearly...) Reach Fair in 2024 where he entertained the thousands of attendees with his wonderful acoustic set and charm.

Brewery Feature: Papworth, Cambridgeshire



Mission Statement: Papworth Brewery was founded on an uncompromising philosophy, 'It's All About The Beer', and an ambition to brew deliciously drinkable ales. The idea is that if we stick to the philosophy, then we'll achieve the ambition.

As beer-loving scientists, what would you say is the main reason for Papworth beers being so 'deliciously drinkable'?

Obviously water is the main ingredient of beer, and water quality is incredibly important to every brewer. So I decided at the outset that we would purify our water and then have complete control over the water chemistry.

There's more to come on our blog about the breweries and artists featured at the festival. We'll look forward to seeing you all October 2nd-6th for a few beers.

Dan and Ruth

Cricket Report



We have arrived at the wrong side of the equinox, so that's another season over. We won five out of our 10 league games and had some closely fought Sunday friendlies.

We are always looking out for new players, so if anyone fancies turning out next year do please get in touch. We take all-comers. And if you feel a bit rusty, we usually have some winter nets, starting January for anyone who wants to come along.

Sunday 21 July Reach 115-9 (Michael Mead 57 n.o.) beat Camden CC 114-8 by one wicket.

A narrow squeak with a wicket in hand.

Wednesday 24 July Cam Kerala 141-6 beat Reach 140-8 by 4 wickets

They always do this to us.

Wednesday 31 July Reach 160-5 beat Balsham 140-8 by 4 wickets

Sunday 4 August Linton 224-4 beat Reach 223-6 declared (Michael Mead 55, Chris Bridgeman 50) by 6 wickets

That declaration looks a bit foolish on paper, but honestly, it didn't at the time.

Sunday 11 August Reach 226-7 (Tim Davies 100) beat Milton 176-9 by 50 runs

This looked grim for a while, as our middle order gulped at what looked like easy runs with eyes like saucers and fell one by one. It took a cussed partnership between Tim Davies and some no-hoper tail-ender to rebuild our innings and put us in a position which proved too much for Milton.

Sunday 18 August Reach 259-5 (James Henderson 101) drew with Chippenham 161-5

This was a declaration game which relied upon us calling a timely end to our innings, to entice the opposition. But we left it too late and Chippenham were happy to bat out for a draw. As the team charabanc pulled out on the road back to Reach, all the talk was of lost opportunity.

Sunday 8 September Reach 200-7 (Tony Fordham 3-5) beat Stansfield 52 all out by 148 runs

Sunday 15 September Cambridge NCI 208-8 beat Reach 185-8 by 23 runs

Rob Steed thumped three consecutive fours off the last three balls; but alas, it was all too late.

Sunday 22 September Reach 190 all out drew with Cherry Hinton 188-9

The most exciting end to a game for the whole season ought to have resulted in a Reach victory but for a couple of last minute dropped catches, as darkness descended and the ball disappeared into a grey sky. Nevertheless, we did avoid defeat, as Cherry Hinton, requiring three off the last ball to win, scrambled only a single.

Ross Clark

CPR and Defibrillator Awareness Training in Reach

Would you know what to do if someone's heart stops?

Every year, there are over 30,000 out-of-hospital cardiac arrests and around 80% of these happen in the home. Without help, less than 1 in 12 people survive, but by starting CPR early and using a defibrillator such as the one we have in the village, you could buy someone several minutes until further help arrives and potentially save their life.



Later this year, I will be offering free 2-hour CPR and Defibrillator awareness sessions for residents in the village. It's very simple to learn and open to everyone, regardless of previous experience. The sessions will give you an awareness of when CPR is needed, teach you how to do it and assist you in feeling confident using a defibrillator.

If you are interested in taking part, please email the following information to training.by.jhl@gmail.com

Name:

Availability restrictions/preferences (daytime/evenings and weekday/weekends):

Previous experience:

Any access needs or other important information:

Once I have gauged interest, I will share dates, times and further details with those interested. If you have any questions about this, please feel free to email me.

James Loftus

Football Report from Bottisham U10 Girls



Nathan Bridgeman from Reach, who coaches alongside the other FA Licensed coach, Lewis Scarff

Below is the Match report from Saturday for Bottisham U10 girls.

MATCHDAY #4 2024-25 SEASON

SAFFRON WALDEN 'WHITE' U10 G 0

VS

BOTTISHAM FC U10 G 9

3 IN-A-ROW, FIRST CLEAN SHEET AND A BIG SCORELINE.....

SEPTEMBER 28th 2024

Games against new/development teams can be quite hard to summarise! Overall a great result, confidence gained from the continuation of a winning run, plenty of goals and a first clean sheet for the team in a league match - huge well done to all the girls.

Plenty of learnings to take in to the next match:

- Gaining composure on the ball - there is always time!
- Showing increased confidence in carrying the ball/dribbling up the pitch.
- Once we win the ball, moving into space rather than crowding our player on the ball.
- Be vocal - If you feel you are in the right position to receive the ball, call it!

PLAYER OF THE MATCH

MACIE-RAE FARNELL

SEABRIDGE SSAS **Farnell Construction**

0-9 FT Score

MATCHDAY SQUAD

2 ABBY DODD-PATRICK

4 LEXY WHITE

5 ESME SCARFF

6 LACEY BRIDGEMAN **C**

7 MACIE-RAE FARNELL

8 ARIA CHAN

9 ELODIE BROWN

11 MOLLY PRESTON

15 MATHILDE EDWARDS

Highlights include Elodie continuing to storm the goal charts, Lacey's first game as captain (plus the clean sheet) and Esme scoring her first league goal, amongst many other positives - well done team!

Macie-Rae was excellent in her team organisation at defending corners, her competitive tackling and attempted to carry the ball forward on a small, congested pitch. Two well taken goals and constant communication with her teammates. WELL DONE MACIE-RAE!

Lacey Bridgeman (below) and Elodie Brown from Reach play in this team.



All the girls are local - Swaffham Prior, Reach, Bottisham and Great Wilbraham. Abby, who won player of the match on Saturday, goes to Swaffham Prior School where her mum teaches. SeaBridge SSAS are proud sponsors of Bottisham U10 girls.

We entered and won a tournament in Cambourne in the Summer, winning 9 of our 11 games. First of many trophies for this very talented group of girls.



We are still looking for players. Qualified coaching is provided on Tuesdays, 5pm to 6pm in Bottisham on 3G pitches behind the swimming pool. League Matches are on Saturday mornings.

Bottisham FC has 60 FA qualified coaches and over 600 players from U6 to veterans. There are girls teams, boys teams and mixed teams.

If your daughter is interested in finding out more, please email or call me, details below.

Nathan Bridgeman

njbridgeman78@gmail.com 07507 929417

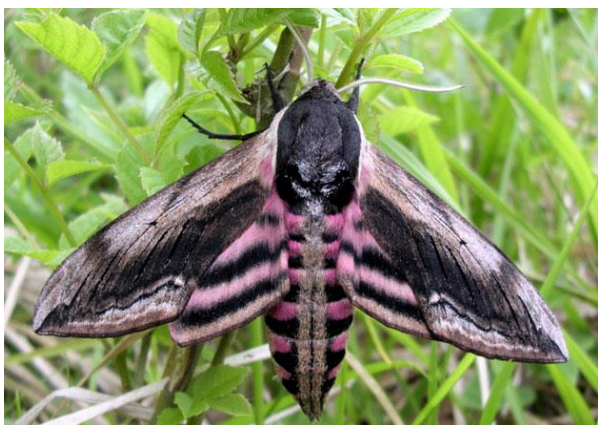
Nature in Reach

Ash (*Fraxinus excelsior*) is the third most common broadleaf tree in UK and is prominent locally where it has prospered in our dry, chalky soils. Good specimens can be found around the village playing field and along local drove-ways, roadsides and hedgerows.



Ash featured in the planting mix of Reach Wood in 1994 and in ideal conditions will reach a height of 35 metres and can live for over four centuries.

Over one thousand organisms are directly supported by ash trees, including more than 30 species of moth, eight of which depend on ash entirely. Caterpillars of the privet hawk-moth, our largest and most striking resident hawk moth, make considerable use of the tree - more than they do of privet! Ash trees also support deadwood-feeding insects such as the lesser stag beetle.



Privet Hawk-Moth

Bullfinches eat ash seeds and woodpeckers, stock doves, owls and nuthatches plus a range of bats use the trees for nesting or roosting.

An ash's open canopy and early loss of leaves in autumn allows sunlight to reach to the ground, encouraging a diverse understory, including hazel, dog violet, wild garlic and dog's mercury. In turn, these plants support a wide range of insects.

Sadly, the ash is under severe threat from the fungal disease ash dieback (*Hymenoscyphus fraxineus*, previously known as *Chalara fraxinea*). The disease, which originated in Asia, spreads by spores emitted from fruiting bodies on the stalks of decaying leaves.

The disease is thought to have been present in the UK for several decades but in recent years its spread, east to west, has been explosive. The spores can be blown over tens of miles. They stick to living ash leaves and then penetrate the tree. The resultant fungus eventually blocks the tree's ability to transport water. Whilst some trees have resistance to the disease, ultimately it seems set to kill over 90% of ash trees. There is no known cure. As such, dieback will have an impact on our landscape and wildlife that will exceed that of Dutch Elm disease in the 1970s.

The full threat of dieback was recognised in 2012 and it influenced our decision to exclude ash trees from the planting mix for the 24Acres woodland.

The disease was officially first recorded locally in 2014 and has become very visible in our parish over the last year or so. The visual impact will increase in coming years. Many ash trees in Reach Wood are dead or dying and trees on the Hythe, including some impressive specimens by the sewage works, are afflicted. As they decay, some will pose a safety threat and will have to be removed.



An example of ash dieback

The decline of the ash will have a financial as well as environmental impact. A 2019 study by the Sylva Foundation, the Woodland Trust and others estimated an economic cost to the UK of £15bn.

However, it is not all gloom. Ash dieback creates opportunities for wildlife. The glades and rides left by dead ash trees provide ideal habitats for a range of species. We are seeing this already at Reach Wood. Butterflies, birds, fungi and flowers such as orchids will thrive in such spots. Dead ash wood will form a prominent part of woodland ecosystems. In time the landscape will establish a new (but different) balance. A small proportion, perhaps 5%, of ash trees have natural tolerance to dieback and will survive and reproduce. It is important these trees are identified and retained but also that there is replanting with dieback-resistant ash trees.

The Living Ash Project was established in 2013 to identify healthy ash trees in dieback diseased woodlands across the UK. The project took grafts from just under a thousand such trees which were then planted out at the National Archive of Tolerant Ash in Hampshire.

Many grafts subsequently developed symptoms of ash dieback and approximately 40% have died. It is likely to be many years before sufficient seed is available to begin concerted restoration of ash in the countryside. The challenge is compounded by the fact that funding for the project ended last year. A future national strategy for replanting ash is now uncertain.

Wildlife sightings around Reach over the last two months have been thin. This often seems to be the case during the summer and reflects reporters being on holiday and wildlife, particularly birds, taking a lower profile.

8 August: there are ten roosting little egrets dotted through the solitary large willow that sits in the middle of Burwell Fen.

11 August: a kingfisher flies fast, low and jet-like, northwards along Reach Lode and under the cycle bridge.

18 August: the village swifts appear to have departed. Swallows now occupy the air over the lower village. We harvest a large crop of plums from our garden. Normally this exercise would be disrupted by wasps. This year there are none. Though glad to avoid competing with the wasps, I find their absence concerning when set alongside multiple reports of the decline of insect life in the UK. Similarly, Ron and Penny Greenhill have remarked on the low numbers of butterflies and moths this year. One cause for optimism, though, might be in the large number and variety of dragon and damselflies seen in our parish this summer. Images of a couple of visitors to our garden are below.



19 August: sizeable flocks of starling and two skeins of greylag geese over Tubney Fen suggest that autumn is approaching. Egrets are again clustered in the large willow on Burwell Fen.

21 August: another sighting of a kingfisher as it peels off from Reach Lode and heads into the Pedvar fishing pit.

23 August: in the course of the day, two grey dagger moth caterpillars strip the leaves from a birch seedling that I had hoped to plant out in the 24 Acres woodland. The caterpillars are hairy with a broad yellow back stripe, designed to ward off predators - much more striking than the moth itself.



Two buzzards move from pylon to pylon across the field to the west of Straight Drove. One moves ahead, the other then follows. The birds are mewling constantly.

3 and 18 September: a Cetti's warbler sings with volume and at length from the tall hedge between the pocket park and Straight Drove.

Mid September: Penny mentions that a robin is singing its heart out in her garden. She also mentions that four roe deer are present on the field of stubble behind the village hall. As always, they are flighty and any human activity sends them prancing for cover.

Graham and Debs Lingley spot common/smooth newts close to their compost heap.

17 September: Ron and Penny see the red kites over the field behind the village hall.

19 September: Claire and I spot an otter moving down the west bank of Reach Lode and entering the maple scrub that surrounds the pond in the upper part of the Pocket Park. An exciting sighting and notable for the time of day (eight in the morning) and proximity to the village.

Nick Acklam



The Geoff Reed Memorial Concert

*An evening of music from Gilbert
and Sullivan and other well-
loved light opera*

18 October 2024

7.30pm

**St Mary's Church
Swaffham Bulbeck**

Tickets £10

*Available on the door or online:
<https://www.ticketsource.co.uk/clog>*

In support of Arthur Rank Hospice

Wicken Fen



Wicken Fen Sunset © Rob Coleman

Now that the long summer days have melted into autumn, Wicken Fen has cooled down and slowed down. Some species have headed south, to warmer climes, just as a new cast of wildlife has arrived from further north. Wild geese, ducks, swans and thrushes. The latter come to gorge on berries and fruits, bright colours in the landscape alongside leaves of a hundred shades.

With autumnal colour, it's a great time of year for walking. Why not join one of our friendly walking groups? The Wednesday health walks start in the car park at 10am every week and on Fridays the gentle-paced Wicken Wellbeing walk starts at 10am in the visitor centre. Warming drinks, soup and scones are available from the café afterwards, along with other tasty snacks and treats.

Before winter sets in, take advantage of the tranquil boat trips, which run daily (depending on weather) until the end of October. Or hire a bike from Cycle Hire, which is open 10am to 4.30pm daily until the end of October, with last hire at 2.30pm and helmets available. We have recently added two recumbent trikes to the fleet. If you'd like more information about what we offer, our Visitor Centre team can always help; we're available from 10am to 5pm daily on 01353 720274.

As always, there will be themed activities at the Family Discovery Area in the visitor centre. And why not browse the gift shop or second-hand Book Nook as the festive period draws ever nearer. Our popular Father Christmas at the Fen events are running each weekend from 23rd November to 22nd December. On 16th November, you can create your own unique prints inspired by wildlife and landscape with tutor Judith Handley's lino-printing workshops. Ideal for greetings cards. Children and adults alike will enjoy our spooky, spider-themed family painting workshop on 31st October and 1st November.

Ajay Tegala

Anglesey Abbey



© National Trust Images/James Dobson

It's the season for crisp autumnal walks and warming hot drinks! While the dahlias are still dazzling, the wider estate is full of autumn colour at Anglesey Abbey. Coronation and Jubilee Avenue are particular highlights at this time of year, as well as the carpet of cyclamen at the end of the accessible Winter Walk.

October half-term

Embark on a Halloween trail this half-term from Saturday 26 October to Sunday 3 November. Explorers will be given a UV torch to find hidden clues and there will be some spooky challenges along the way. Are you up to the challenge? Trails are £6 per child, which includes a clue card to fill in as you go, as well as a prize at the end. Please note that normal admission applies.

Looking ahead, we're excited to announce that Wild In Art's 10 life-sized bear sculptures are coming to Anglesey Abbey from 19 November 2024 to 5 January 2025. **The Bear Hunt trail** is inspired by Michael Rosen's beloved children's story *We're Going on a Bear Hunt*, illustrated by Helen Oxenbury and published by Walker Books.



© David Oates Photography

Head to nationaltrust.org.uk/AngleseyAbbey to find out more about the sculpture trail and to book your tickets to see **Father Christmas in the house**.

Issy Vetoshkina

Senior Communications and Marketing Officer

Burwell Surgery Patient Participation Group

Pharmacy First

At our July PPG meeting we discussed "Pharmacy First" which launched in January 2024 and thought it would be helpful to explain more about how this new service operates. Pharmacy First has been introduced by the NHS as a way of allowing patients to get treatment for common infections without needing a GP appointment. It covers seven conditions:

- sinusitis (12 years and over)
- sore throat (5 years and over)
- earache (1-17 years)
- infected insect bites (1 year and over)
- impetigo (1 year and over)
- shingles (18 years and over)
- uncomplicated urinary tract infections (UTIs) in women aged 16-64 years

For each condition the pharmacist has to follow clear guidance on when a patient can be treated under the service and when they should be referred to another healthcare professional - this is what the pharmacist will use to decide if the patient is eligible for the service. People with symptoms suggestive of the seven conditions will be provided with advice and if it's clinically appropriate, they will also be supplied with a prescription-only treatment (where normal NHS prescription charge rules will apply) or an over-the-counter medicine.

This is an extension of the service previously called Community Pharmacy Consultation Service (CPCS) where minor illnesses were referred to the pharmacy for advice and over-the-counter medicine. The Pharmacy First scheme now incorporates minor illnesses such as skin rashes, coughs, colds, hay fever, stings, heartburn and many more. Pharmacists are unable to prescribe prescription-only medication for these minor illnesses but can offer advice and over-the-counter medication and refer patients back to the GP/elsewhere if necessary.

Over 95% of pharmacies have signed up to offer Pharmacy First, including Jardines in Burwell as well as Boots, Lloyds and Superdrug. You can visit a pharmacy without a referral, or you might be referred electronically to a participating pharmacy of your choice by the Burwell Surgery team following an AskMyGP enquiry, or after contacting other parts of the NHS like 111.

The PPG heard some good examples from the Surgery of where people had made contact through AskMyGP about a minor condition while they were at work and had been given an electronic referral to a pharmacy near their workplace, allowing them to start a course of treatment immediately.

The next meeting of the PPG is at 6.30pm on Tuesday 15th October 2024 at Burwell Day Centre – all welcome. We had a great turnout for July's meeting when we also successfully trialled remote access for four people who were not able to attend in person. If you would like to attend the PPG for the first time, or if you can't attend in person but can join via Microsoft Teams, then please contact admin.burwellsurgery@nhs.net

Food Focus

Alternative Lasagnes

I always feel lasagne is so 80's, but food fashions don't get in the way of it being enjoyed by family, particularly if served in true 80s fashion with garlic bread and peas. I keep looking for a ready-made garlic bread without palm oil in so that I can at least cheat on that bit, but it doesn't seem to exist.



Instead, I've mastered a relatively easy one made using ciabatta sliced into rounds, mixing soft butter with garlic puree and fresh crushed garlic, spreading the mixture on both sides and grilling them under a hot grill.

The first lasagne has become a staple at home now that I can get hold of free range pork mince relatively easily (shout out to Spinney Abbey here). It's also called an express lasagne and I'm not sure I'd put it into that category, but it is very tasty. The children make a bit of a fuss if I put the chilli in, but for adult tastes it definitely improves it. This Lasagne Express Recipe Is From Absolute Favourites Cookbook by Mary Berry

Ingredients

For the pasta:

75g of grated cheddar cheese
Butter for greasing
Six large lasagne sheets. Lasagne sheets vary in size, so you may need more

For the Pork and Spinach Sauce:

1 tbsp oil
450g (1lb) pork sausage meat
1 tbsp plain flour
1 red chilli, deseeded and finely chopped
2 fat garlic cloves, crushed
250g (9oz) chestnut mushrooms, sliced
200ml (7fl oz) full-fat crème fraîche
100g (4oz) baby spinach, roughly chopped
Salt and freshly ground black pepper

For the Tomato Sauce:

500g (1lb 2oz) passata
2 tbsp sun-dried tomato paste
1 tsp light muscovado sugar
1 tbsp chopped thyme leaves
1 tbsp chopped sage

1. **Prepare the Dish:** Preheat your oven to 200°C/180°C fan/Gas 6. Grease a 2.25-litre (4-pint) ovenproof dish (approximately 30 x 20 x 6cm / 12 x 8 x 2½in) with butter.
2. **Soften Lasagne Sheets:** Soak the dried lasagne sheets in recently boiled warm water until they soften, while you make the sauces (I actually don't think you need to do this)
3. **Cook Pork and Spinach Sauce:** Heat oil in a large non-stick frying pan. Add the sausage meat and cook over high heat for 5–10 minutes until browned. Sprinkle in the flour and cook for 1 minute. Add the chilli, garlic, and mushrooms, cooking for about 5 minutes. Stir in the crème fraîche and spinach, bring to a boil and cook for a couple of minutes. Season with salt and pepper, then set aside.
4. **Make Tomato Sauce:** In a jug or bowl, mix the passata, sun-dried tomato paste, light muscovado sugar, thyme and sage. Season with salt and pepper.
5. **Assemble the Lasagne:** Drain the lasagne sheets. Layer one-third of the pork and spinach sauce in the base of the prepared dish. Top with one-third of the tomato sauce and half of the pasta sheets. Repeat with two more layers of pork and spinach sauce, tomato sauce, and pasta sheets. Sprinkle the grated Cheddar cheese over the top.
6. **Bake:** Bake in the preheated oven for 30–35 minutes, or until the pasta is tender and the top is golden brown and bubbling around the edges.

Julius Roberts' Courgette & Pesto Lasagne



This recipe from a chef called Julius Roberts, is overly complicated and somewhat unrealistic (in my opinion) in that he suggests you make the pasta and the pesto...come on! However, two friends have cooked and enjoyed it (without making the pasta or the pesto) so it's making the cut just in case you're still overwhelmed with courgettes.

Finely slice 2/3 courgettes using a mandolin or knife and fry until soft but not mushy or coloured in olive oil and garlic. Make a béchamel sauce as you would normally. Season it with salt, pepper, bay leaves and nutmeg. Add a handful of chopped lemon zest and finish with a generous squeeze of lemon juice. Maybe pre-dip the pasta sheets in this recipe in boiling water (he then puts them in cold) and then start layering up.

Start with a thin layer of béchamel on the bottom, pasta, courgettes, béchamel, dots of pesto and repeat as many times as you like or have ingredients for. Top the final layer with mozzarella, parmesan and pepper. Put into the oven for 35 minutes at 180°C.

Red Bean Lasagne – from the 60s or 70s Cranks (?)

I couldn't find this recipe anywhere online either and I'm not sure anyone in our family has still got the book it originally came from, but I think it came from Cranks. I became somewhat renowned for serving it when I was a student...and possibly not in a good way, but I think it is one of my most loved dishes of all times. At a guess it may have been the wind generated by the dish which wasn't always appreciated.

There is a bit of guess work involved here again with quantities and ingredients, but I did make it so many times albeit 30 years ago, I think I can just about remember them.

Ingredients

Lasagne sheets
1 x quantity of béchamel sauce (with a grating of nutmeg in it)
1 x tin kidney beans
1 x tin of chopped tomatoes/passata
1 x onion finely chopped and fried
1 x tsp cinnamon
1 x tsp honey

To make the red bean part of the dish...fry an onion in oil until soft, add the tin of kidney beans drained and the tomatoes. Bring to a simmer and then when everything is mixed together and cooked through add the honey and cinnamon (key ingredients). Using a potato masher, then mash the mixture so that the beans are broken up and the mixture becomes more like the consistency of mince. Layer the pasta between the bean and tomato mixture and finish the dish off with béchamel. Cook in the oven at 180°C for 35/40 minutes. I don't remember putting cheese on top and thinking about it now, I don't think it's necessary or right – so don't!

Catherine Gibson

Letter from the Vicarage

Harvest – an opportunity to gather to say thank you for our world, for those who work so hard to provide the food we eat. We will have celebrated Harvest at St Etheldreda's in Reach on Sunday 29th September at 10.00am and then will be celebrating at St Mary's, Burwell, at our Café Church on Sunday 6th October at 10.00am. Please bring contributions to the services – tins/packages or produce – all will be donated to the Foodbank or distributed in the village.



Café Church is at St Mary's on the first Sunday of the month - a space that anyone can come into, feel welcome and at ease and perhaps 'dip a toe in the water' of coming to church. It's OK to arrive late and everyone is welcome to enjoy a hot drink and pastries, alongside activities for all ages, related to the theme of the day. A short service begins about 10.25am with all the usual elements of hymns, bible readings, talk, prayers (and notices!).

Refresh Café is in St Mary's every Friday morning from 10.00am, a friendly and welcoming group for babies and toddlers with their carers, including a simple sandwich lunch each week. As a church, we are part of Burwell Food Support Group and have been running a Pop-up Pantry on Fridays 2.00-3.00pm at Burwell Day Centre.

As we go into the winter, we will be looking at other ways of supporting our community, particularly those who are struggling to make ends meet, offering hospitality where we can. CentrePeace is our bookshop and drop-in venue on the Causeway and we're pleased that we have been able to extend opening times to: Tuesday 10 - 12.30, Wednesday 2 – 4, Thursday 10 - 12.30 and 2-4, Friday 10 – 12.30, Saturday 10 – 12.30. Do drop by for bargain books and jigsaws and for a cuppa and a chat. Messy Church is on a Sunday afternoon, twice a term at 4.00pm, for families with children of all ages.

November is Remembering month and on 3rd November 3.00pm at St Mary's, Burwell, is our service for those who have been bereaved, an opportunity to give thanks and light a candle to remember loved ones. Remembrance Sunday is on 10th November, with the service in Reach starting at 10.50am at the War Memorial and continuing in the church. In the afternoon, the joint Churches Together service will begin at 2.30pm at Burwell War Memorial, continuing in St Mary's at 3.00pm. For updates about what's going on at St Mary's, Burwell or St Etheldreda's, Reach, please see our Facebook pages and website. We aim to livestream most of our weekly 10.00am Sunday services on Facebook.

Please get in touch for more information about these or any of our events or services, including weddings, funerals, christenings and baby thanksgivings, or if you would value an opportunity to chat.

Revd Canon Dr Eleanor Williams

Vicar of Burwell with Reach

01638 741262

vicar@stmarysburwell.org.uk

www.stmarysburwell.org.uk

www.facebook.com/stmarysburwell/

Burwell Food Support Group
Pop-up Pantry & Ely Foodbank
working together
to support our local community
at Burwell Day Centre
Fridays 2.00 - 3.00pm
and Wednesdays as advertised

Pop-up Pantry is working towards reducing waste and offers short life food and more as is available.

Donations towards the Pantry are gratefully received and can be dropped off at the Day Centre.

A voluntary contribution of £2 is helpful towards running costs.

Ely Foodbank provides food for 3 days and can help with issues such as benefit changes, low incomes and more.

Citizen Advice join the team on 1st Friday of month.

If you require help from the Foodbank please ring 01353 468626

or email info@ely.foodbank.org.uk

Burwell Food Support Group links individuals and groups working to support those in need in our community, and includes Burwell Help Group, Open Arms, St Mary's Church, Burwell Baptist Church, Burwell & District Day Centre, Burwell Co-op



REMEMBRANCE SUNDAY

IN REACH

10th November 2024

10.50pm Act of Remembrance

at Reach War Memorial



**Service will continue
in St Etheldreda's**



Light a Candle Service
Time to Remember a Loved One
Sunday November 3rd 2024
3.00pm

St Mary's Church, Burwell
followed by Refreshments

A simple service of hymns, readings & prayers
to bring comfort to those
who have been bereaved

Stars will be available to write on
for the Christmas Remembering Tree
Let us know if you can't come,
but would like a name written on a star

Burwell and Reach Car Scheme



The Burwell and Reach Car Scheme offers those with travel restrictions or mobility issues a drive to the doctor, dentist, hospital, optician, hairdresser, shopping or just a visit to a friend, at a cost of 30p per mile. Just leave a message on 07399 154913 with your requirements and someone will get back to you. Or contact me, Pam King in Reach on 07484 852889. If anyone in Reach would like to volunteer to drive we are always grateful for extra people. Just leave a message on the answerphone 07399 154913.

Burwell History Society

Burwell History Society meets from September to May each year at the Gardiner Memorial hall in Burwell on the 3rd Wednesday of the month. Our meetings start at 7.30pm and all are welcome. Visitors are welcome for £3 on the door.

October 16th Ellie Seymour 'The Royal station master's daughters'

November 20th Sarah Doig To relieve need and distress
The story of East Anglian almshouses.

For more information on the society please go to:
<https://sites.google.com/view/burhis/start-page/>

Susan Bluck

Swaffham Prior Parochial Charities

Once again the time has come to remind everyone who lives in Reach and who considers themselves to be eligible for our Christmas Grant, now is the time to apply.

The majority of applications come from pensioners, in particular those who have to manage on the State Pension and it may be that in the present times of uncertainty, support is required.

If you are in need of help or know someone who may be in difficulty but who are unlikely to apply on their own behalf, please do get in touch. The Trustees will always be happy to consider requests for assistance and confirm ALL applications will be dealt with in confidence.

Financial support is available throughout the year, not only at Christmas. Please apply to:
Pam Waters, Clerk to the Trustees, 01638 741035

PRIOR FEN CHAPEL

"The Little Chapel in the Fen"

Harvest Festival Service

Sunday 6th October - 3pm

Traditional harvest service and hymns

Produce welcome

Burwell and Reach Community Fund

Burwell and Reach Community Fund will award grants to charity and community projects benefitting residents of Burwell and Reach Parishes.

Apply for a grant

Grants of up to £2,000 will be awarded to projects that:

- Strengthen the community and build resilience
- Provide or maintain community assets
- Enhance the environment/surroundings for the benefit of those communities.

Applications for grants above £2,000 will be considered on exception.

The fund will accept applications on an annual basis.

The first application deadline is 1 November 2024, with outcomes expected to be shared in December 2025.

To apply for a grant, visit
www.cambscf.org.uk/funds/burwell-and-reach

Become a panel member for the fund

Cambridgeshire Community Foundation is recruiting volunteer panel members who will bring valuable local knowledge to discussions about projects applying for grants. Your input will help to ensure that funded projects add real benefit to your local community.

Eligibility

- You need to be a resident of Burwell or Reach Parishes.
- You need to be available to review applications (approx. 1 hour) and attend the panel (approx. 1 hour) once per year. Panel meetings will take place in Burwell or Reach.
- You need to agree to be bound by the eligibility criteria of the fund and the rules for its administration.

We are particularly seeking representation from younger residents aged 16-25.

How to apply

Please email viv@cambscf.org.uk or call [01223 410535](tel:01223410535) to express your interest in this role.

There will be an interview selection process and training will be provided to the appointed panel members.

Burwell Museum

In July, the Museum were gifted a rather special vehicle by Colin Lowe – the old baker's van from Swaffham Prior. Manchetts kindly transported it from Shropshire to the Museum. The Lowe family bought it new in 1935 and it was used to deliver bread in and around the Swaffham Prior area including Burwell. You can find it in our Vintage Vehicle building along with the several other local delivery vehicles, along with a Burwell & District Bus. This building is now close to capacity so the Museum has obtained planning permission to extend it. Sadly however, we are unable to carry this work out as we don't have the funds to make this happen.



Over the bank holiday weekend, the Museum celebrated its Annual Classic Car and Bike Show where we welcomed 40 cars and 10 bikes. One of our exhibitors come on his period bike, in period uniform, all the way from Bedford. We were also joined by Jane Osberton of Villa Weaving Wheel, who gave demonstrations on spinning and encouraged visitors to take part and the Mildenhall Model Club.



A big part of the Museum and the Village is our Windmill. As the wind was in the right direction and strong enough, our Mill Team were able to get the sails turning for us on the day too, which is just such a delight to see and had people transfixed. A huge thank you to them for that and for our other volunteers who helped on the day.

However, our biggest thanks go out to you our Visitors. Some of you found us for the first time, which helped us to make this event such a successful fundraiser. Our next event is an exciting new event for Christmas. On Sunday 1st December we will be hosting Santa in the Mill. Further information is on our face book and tickets are available on our website.

Our Mill team have flagged to the Trustees that they are looking for new team members, who have rope access or MEWP operation certification and the willingness to learn about the mill. The current team's training expires next year and in their own words 'they are getting on a bit'. If you think you would like to get involved and join one of our teams, then please get in touch museum@burwellmuseum.org.uk or come along on a Tuesday morning and ask for Clive Leach.

Finally, we have an appeal from our Collections team who are starting to plan for next year's exhibits. We have been gifted a hand loom and we have been offered a large tapestry loom, which we are hoping to put together in a cottage linen manufacture exhibit. Obviously keeping with the Museum ethos, preferably from Burwell, but they are looking for items related to linen manufacture, spinning, weaving, dyeing, sewing, etc. Family history or local photos where weaving took place in the village, would also be welcomed. Please remember that the Museum offers a loan scheme if you didn't want to give any items that are precious to you. If you could photograph any items, sending images to us at museum@burwellmuseum.org.uk for consideration by the team, it would be appreciated.

If you are reading this and thinking you should visit us, then there is still time, as we are open until the end of October!

Trustees of Burwell Museum

Tales from a Reach Garden

Currently we're enjoying a spell of warm sunshine and it has been pleasant to sit outside in the afternoons watching buzzards soar overhead, small birds flit from bush to bush, butterflies visit the autumn flowers, and squirrels bury our walnuts in pots, vegetable beds and the lawn.



The squirrels show no fear in our presence once they've realised that we're sitting down and unlikely to scare them off, although they are quite skittish as soon as we venture outside into the garden. We try to remember where they've buried the nuts and if we're very lucky we find them, usually in the vegetable beds and pots. In Spring we spot other forgotten walnuts but only once they've germinated, alas, but hopefully before they've developed a huge taproot so they're easy to lift up.

This summer has been amazing for dragonflies and damselflies. We have never seen so many in our garden and different types too, which is remarkable considering they're often found around wetlands and water courses and they've rarely ventured as far as our garden before this summer - we don't have a pond other than a large rectangular tub which fills up with rainwater occasionally.

In the last couple of years, we did see hobbies swooping through our garden chasing the odd dragonfly that dared to venture this far away from the lode, but we haven't seen the aerial acrobatics of these small falcons in our garden this year, so far.



A cluster of green "Supermarmande" tomatoes

This spell of warm weather is very welcome after last week's blast of northern winds which dropped overnight temperatures to near-zero. I thought winter had arrived very early! Most of the vegetables in the garden just stopped growing and some even started to die. Either the leaves became mildewed (courgettes and cucumbers) or dropped off altogether (climbing beans). Even in the polytunnel, the tomatoes stopped ripening once the temperatures plummeted overnight. Before that cold snap we had been picking lots of delicious ripe tomatoes every day since mid-July. There is still a third of the crop left to ripen, so we've removed most of the leaves and flowers to encourage the fruits to turn colour, currently most of them are green (see previous picture).

The "Cobra" variety of climbing beans are starting to put out a fresh set of leaves and even a few flowers, but if this warm weather comes to an end soon, then the beans are done for this year. In most years they would be cropping well into October and only then would we decide to stop them cropping because the plants would be looking very ragged even though they would still be productive, we realised that they would cease to be productive once all the leaves have fallen off. The climbing beans have already reached that stage now, only the beans that had already formed continue to ripen because the plants are trying to set seed, but the bean pods growing now are not as straight, nor as long as they had been during the summer.

The courgette plants are also trying to form new leaves and there are a lot of tiny embryonic courgettes with flower buds, but unless the weather continues to stay warm and dry, they are unlikely to grow much more and they will be dug up.

Other squash plants such as our butternuts have taken a long time to get going this summer but thanks to the heavy rains the plants were very leafy, normally the foliage dies back at this time of year as the squash ripen. We had to chop back the leaves to allow light through, as sunshine is needed to ripen the skins of the butternuts. We also wanted to see how many butternuts we had because they were so well hidden under the mass of foliage. As it turned out, there were more butternuts than we had expected! Some of them are huge and almost fully ripe, but about half of them are green and under-ripe and need more sunshine to harden their skins to allow them to be stored. A couple of the smaller ones have already started to rot while still attached to their plant.

All of the squash plants need lots of sunshine and took some time this summer before they started fruiting, which they did every time there was a hot spell of weather in July and August, but overall, this gloomy and mostly damp summer has been quite disappointing for them.



Nearly fully ripe butternut squash almost ready to be picked



A large, green and under ripe butternut- will it ripen before the frosts?

On the other hand, this has been an excellent year for plums, apples and pears. Our Victoria plum tree almost collapsed under the weight of fruit as they ripened under the August sunshine, Richard had to prop up a couple of branches as they looked like they were about to splinter under the excess weight. The wet weather this year has been a boon for most of the fruit trees which have looked healthier and leafier than they usually do. Of course, this means that there will be a lot of winter pruning to do for the apple trees after the fruit has been picked. However, now is the time to prune plums, while it is still dry and before the frosts and heavy autumn rains arrive.

Danuta Gibson

Know Your Parish Council

Your Parish Councillors are:

Edward Hall	Chair
Nick Acklam	Councillor
Hilary Fielding	Councillor
Rowan Foster-Marian	Councillor
Catherine Gibson	Councillor
Tim Quilter	Councillor
Vacancy	Councillor

Please contact Susan Bailey if you are interested in being co-opted onto the Parish Council.

Also:

Charlotte Cane	District Councillor
John Trapp	District Councillor
Joshua Schumann	County Councillor

Meetings normally take place in the **Village Hall** on the first **Tuesday** of each month. They will in future start at **7.30pm** (note new timing) and all Reach villagers are welcome to attend. The next meeting will take place on Tuesday October 1st.

Your Clerk is **Susan Bailey**
 29 Great Lane Reach CB25 0JF 01638 743794
clerk@reachparishcouncil.org

Know Your District Councillors



FULL COUNCIL

The Full Council meeting took place on Thursday 25 July. Unfortunately, due to a fatality on the rail line, Charlotte was unable to travel to the meeting from London.

Corporate Plan action plan

John joined the rest of our political group on the Council in abstaining on the Administration's proposed Corporate Plan action plan. There were some elements we supported, such as the work on inclusive play, which we had initiated. But some elements did not go far enough, some were unevidenced and some such as the Mepal crematorium we continue to oppose.

- The Plan said the Council would be 'engaging' with the Combined Authority's ongoing bus reform work—just days after the Leader of the Council had abstained on it at a Combined Authority Board meeting.

- And the 'Road Safety Volunteer Scheme' that Conservative Councillors have pressed the police into taking on was mooted in the autumn of 2021 and three years later there is nothing to show for it.

- A few priorities were identified, but had no actions associated with them.

It was not clear what the Action Plan would do to address the challenges the report identified such as the cost of living and recruitment and retention of staff. Meanwhile it complained about priority and capacity concerns at the Combined Authority, but not those at East Cambridgeshire District Council for which it is directly responsible.

CHANGES TO NATIONAL PLANNING POLICY FRAMEWORK

The Government has launched a consultation on plans to amend the National Planning Policy Framework and other planning reforms (link below). Many of the changes will primarily affect District Councils as local planning authorities in their local plan and development management functions.

Two of the main changes proposed are as follows.

1. The new method will include a stronger affordability ratio driver and the removal of the clause about previous oversupply in an area – to give a combined national target of 370,000 new dwellings per year.

2. The need for Councils, Housing Associations and other providers to deliver genuinely affordable homes—changes will be delivered through increased Government investment, changes to borrowing rules and rent stability.

This will have obvious implications for East Cambridgeshire, whose Local Plan is now nine years old and where the building of affordable homes has been below what is needed for many years (4,548 dwellings have been completed in the last twelve years, of which fewer than 18% have been affordable.)

Background information:

Written statements - Written questions, answers and statements - UK Parliament

<https://questions-statements.parliament.uk/written-statements/detail/2024-07-30/hcws48>

Proposed reforms to the National Planning Policy Framework and other changes to the planning system - GOV.UK (www.gov.uk)

<https://www.gov.uk/government/consultations/proposed-reforms-to-the-national-planning-policy-framework-and-other-changes-to-the-planning-system>

Bus Franchising Consultation

The CPCA will be engaged in a consultation on bus franchising which may provide the County with an opportunity for a strategic bus policy and to provide new routes.

Change of allegiance

One of the Conservative members has become an Independent and so the distribution of membership is now: 14 Conservatives, 13 Lib Dems and 1 Independent. We shall see how this affects decision-making within the Council, but it could be significant.

Waste collection

The working party on waste collection has made recommendations to the Operational Services Committee that have been accepted and it could mean a fortnightly black bin (smaller than the other two bins in order to encourage re-cycling) to replace black sacks, and a weekly food waste collection in smaller bins. Full details will be provided to all residents.

Our next surgery will take place on Tuesday 22 October from 6.30 to 7.30 at Brinkley Village Hall

Cllrs Charlotte Cane and John Trapp

Cllrs Charlotte Cane

07976 607512 charlotte.cane@eastcambs.gov.uk

and **John Trapp**

01223 812120 john.trapp@eastcambs.gov.uk



Parish Council Meeting Minutes

Minutes of Reach Parish Council meeting held at the picnic benches near to the playground on Friday 19th July 2024 at 6.30pm

Attendance

Charlotte Cane	Vice Chair	Present	Susan Bailey	Clerk	Not Present
Catherine Gibson	Councillor	Present	Charlotte Cane	District Councillor	Present
Edward Hall	Chair	Present	Joshua Schumann	County Councillor	Not Present

Apologies for absence – received & approved.

Forum for members of the public – nothing to report

Declaration of Interests – there were none.

1. New Councillors

The PC were very pleased that several residents had come forward to join the Council following the urgent call for new Councillors. The following were co-opted as new Parish Councillors

Tim Quilter
Hilary Fielding
Nick Acklam
Rowan Foster-Marian

Clerk to complete the necessary paperwork and inform ECDC.

It was agreed that future PC meetings would still be held on the first Tuesday of the month but at a new time of **7.30pm**.

2. Resident request regarding scattering of ashes

A letter had been received requesting the scattering of ashes on the 24Acres.

The resident would also like to install a memorial bench in the same style and area as “Rita’s” bench. Following discussion, it was agreed that this was acceptable subject to NT agreement and that the bench would not be installed in a permanent way, that is not concreted in place. **Clerk** to contact NT & inform the resident.

3. Next meeting date

Following discussion, it was decided that the next PC meeting would be 3rd September at the new time of 7.30pm

4. Payments

E.on Next – power on the green	£77.87
Fused – Yearly IT provision	£707.04
S Bailey – Clerk salary	confidential
S Bailey – stationary	£35.90
S Reader – Cemetery tree works	£250.00
Parish Council Websites – website	£238.98
CR Contracting – Mowing contract	£326.00

The payment to Fuse was delayed as Councillor all had asked for a breakdown of the service which had not yet been received. All other payments **Councillor Hall** to approve online.

The next Parish Council meeting will be on 3rd September 2024 at **7.30pm**.

The agenda for this meeting will be issued by the previous Tuesday and can be accessed from the Parish Council area of the Reach website (www.reach-village.co.uk).

Minutes of Reach Parish Council meeting held in the Village Hall on Tuesday 3rd September 2024 at 7.30pm

Attendance

Nick Acklam	Councillor	Present	Tim Quilter	Councillor	Present
Hilary Fielding	Councillor	Not Present	Susan Bailey	Clerk	Present via Zoom
Rowan Foster-Marian	Councillor	Not Present	Charlotte Cane	District Councillor	Not Present
Catherine Gibson	Councillor	Present	John Trapp	District Councillor	Not Present
Edward Hall	Chair	Present	Joshua Schumann	County Councillor	Not Present

Apologies for absence – received & approved.

Forum for members of the public – none present.

Declaration of Interests – there were none.

1. Acceptance of office forms to be signed

Signed and approved.

2. Co-option of new Councillor

Unfortunately, no one had come forward to apply for the additional vacancy. **Clerk** to email village again, **Councillor Hall** to contact those who applied previously.

3. Election of officers –

Following the resignation of Councillor Cane the positions she held on the Council are vacant. Vice chair, village hall, Burwell solar farm. Following discussion, it was agreed to discuss this at the October meeting when the additional Councillors will be present. **Councillor Hall** to circulate a document detailing these positions and any others which it may be helpful for a new Councillor to take on.

4. Planning

There were none.

5. District Councillor Report

There has been no meaningful activity in the District this month.

One of the Conservative District Councillors has changed to being Independent, which means that now the composition of the Council is 14 Conservatives, 13 Lib Dems, and one Independent.

The Mayor of the Combined Authority is starting a consultation on bus franchising in the County. The bus de-regulation introduced by an earlier government has led to an inadequate bus network, whereby only profitable routes are retained, and not used to subsidise loss-making services; we had an example of this when Stagecoach decided to stop the no. 11 bus, and it was only through support by the Mayor's office that the no. 11 continued in service. Stephenson's bus company also run a commercial bus service, no. 12, from

Newmarket to Cambridge via Bottisham, and that is one of a number of reasons why the no. 11 does not go through Bottisham, as the company feels that it may take some of its passengers from its commercial operation.

The idea of bus franchising is that the bus services throughout the county will be organised by the Mayor's office to provide a holistic service whereby more profitable routes are used to subsidise less profitable routes.

There are several pros and cons for bus franchising, and these will be explained in the presentations.

The franchise consultation events are:

18th September, 1pm to 3pm Market Street, Ely

1st October 8.30am to 10.30am Longstanton Park and Ride

1st October, 11am to 12noon Oakington Busway

All the events can be found here <https://cpca-yourvoice.co.uk/bus-franchising-consultation/key-events/>

A discussion took place regarding the bus service to/from Reach and that it will no longer go from the village directly into Cambridge. It was felt that this was disappointing and detrimental for the village.

6. County Councillor Report

None received.

7. Minutes of previous Meeting

Approved as correct.

8.1 Reach Grant Fund sports day

A request had been received for £120 for the annual village sports day. A risk assessment had also been received. Approved.

8.2 Finance Nothing to report

8.3 Parish Council Members Nothing to report

8.4 Play Spaces Please see below.

8.5 Rights of Way Nothing to report

8.6 24Acres Committee

The National Trust will be submitting an application to ECDC to build ponds on the land it retains. The PC had previously given support in principle for the proposal and construction of ponds on the 24 Acres was a key objective of the Reach Nature Recovery Plan (which was commissioned and endorsed by ECDC). **Councillor Acklam** to establish from the NT if a letter from the PC to ECDC supporting the application would be helpful.

There are tentative plans to undertake hedge laying at the 24 Acres in early 2025. The project would be led by Cambridge Conservation Volunteers. There was also the possibility of coppicing hazel from Reach Wood in late 2024 to help the hedge laying. Conversations with the Woodland Trust, which owns the wood, are ongoing. If things fall into place the PC will be asked to approve both tasks at future meetings.

8.7 Friends Of Reach Wood Nothing to report

8.8 A to B1102 Group

Nothing to report. New councillors were interested in the work of the AtoB1102 group and the progress of the GCP. **Clerk** to ask the group for an update for the next meeting.

8.9 Nature Recovery Plan Nothing to report.

8.10 Hythe Restoration Group

Requests to local authorities for information on the background to the construction of the sewage works in the 1960s had drawn a blank. A similar request to Anglian Water was outstanding.

9. Parish Council Communications & Website, an update

The website is nearly ready to go live. **Councillor Hall** to send a link to the Councillors for feedback before the site is completed. The new website will allow the PC to communicate better with the village and hopefully avoid future misunderstanding. A communications officer will be required.

10. Defibrillator update

A member of the village had come forward to volunteer to help with the defibrillator. To do regular checks on the machine and direct the PC as to when new parts are required or when a service is due and the best place to do this. Additionally, he would be happy to provide informal training sessions on its use in the village hall for residents. Although he does not currently train, he has more than 16 years of experience in first aid and has taught basic first aid through to the ambulance level courses for large organisations, including St John Ambulance and the British Red Cross. The PC is very grateful for this, and **Councillor Gibson** will make contact and take this forward.

11. Playground yearly inspection report & FB complaint

The annual playspaces inspection had taken place, with everything being either low or no risk. A few items need a little TLC. There had also been some negative comments regarding the playground posted on social media. The PC does not have the funds to employ someone to regularly maintain the playground and it was suggested that villagers and those that use the playground could get involved in its upkeep, perhaps a twice yearly morning activity. Perhaps the Events team could help organise this. **Councillor** to make contact.

12. Grant fund charity update – ongoing payments & application etc

There is a little more paperwork to complete before the charity can take full control of the grant fund. Once completed **The Clerk** to transfer any remaining funds from the PC and close the account.

4. Payments

E.on Next – power on the green	£65.10
Balfour Beatty – streetlight maintenance	£441.60
CR Contracting – Mowing contract	£662.00

The next meeting will be on Tuesday 1st October starting at 7.30pm in the Village Hall. The agenda for this meeting will be issued by the previous Tuesday and can be accessed from the Parish Council area of the Reach website (www.reach-village.co.uk).

Diary Dates and Bus Timetable

October	Event	Location	Time
Tuesday 1	Recycling Day (Brown/Green)		
Wednesday 2 to Sunday 6	Dyke's End Beer Festival	Dyke's End	5.00pm onwards
Sunday 6	Holy Communion	St Etheldreda's, Reach	8.30am
Tuesday 8	Recycling Day (Blue)		
Tuesday 15	Recycling Day (Brown/Green)		
Wednesday 16	Holy Communion	St Etheldreda's, Reach	10.30am
Tuesday 22	Recycling Day (Blue)		
Friday 25	Wear it Pink	Village Hall	3.30pm
Tuesday 29	Recycling Day (Brown/Green)		

November	Event	Location	Time
Sunday 3	Holy Communion	St Etheldreda's, Reach	8.30am
Tuesday 5	Recycling Day (Blue)		
Tuesday 5	Parish Council Meeting	Village Hall	7.30pm
Sunday 10	Remembrance Service	The Memorial and the Church	10.50am
Tuesday 12	Recycling Day (Brown/Green)		
Tuesday 19	Recycling Day (Blue)		
Tuesday 26	Recycling Day (Brown/Green)		
Wednesday 20	Holy Communion	St Etheldreda's, Reach	10.30am



Service No. 11 - Newmarket to and from Cambridge

Monday to Saturday only	NS	SO	NS	SO											
Newmarket, The Guineas Bus Station	--	--	700	700	820	920	1020	1120	1220	1320	1420	1520	1620	1745	
Newmarket, Academy	--	--	703	703	823	923	1023	1123	1223	1323	1423	1523	1623	1748	
Newmarket, Studland Park Centre	--	--	710	710	830	930	1030	1130	1230	1330	1430	1530	1630	1755	
Burwell, Ness Road	639	649	721	721	841	941	1041	1141	1241	1341	1441	1541	1641	1806	
Burwell, Hawthorn Way	641	651	723	723	843	943	1043	1143	1243	1343	1443	1543	1643	1808	
Reach, Great Lane	653	703	--	--	855	--	1055	--	1255	--	1455	1555	1655	1820	
Swaffham Prior, Cage Hill	658	708	737	737	900	957	1100	1157	1300	1357	1500	1600	1700	1825	
Lode, Fassage Close	--	--	--	--	--	1004	--	1204	--	1404	--	--	--	--	
Stow cum Quy, Station Road	708	718	751	747	910	1012	1110	1212	1310	1412	1510	1610	1710	1835	
Fen Ditton, Cambridge Airport	718	728	804	757	920	1022	1120	1222	1320	1422	1520	1620	1720	1845	
Cambridge, Drummer St Bus Station	732	742	816	811	934	1034	1134	1234	1334	1434	1534	1634	1734	1859	

NS = Not Saturdays, SO = Saturdays Only

Cambridge, Drummer St Bus Station	650	750	850	950	1050	1150	1250	1350	1450	1550	1715	1815	1915	
Fen Ditton, Cambridge Airport	702	802	902	1002	1102	1202	1302	1402	1502	1602	1727	1827	1927	
Stow cum Quy, Station Road	712	812	912	1012	1112	1212	1312	1412	1512	1612	1737	1837	1937	
Lode, Fassage Close	--	--	920	--	1120	--	1320	--	1520	--	1745	--	--	
Swaffham Prior, Cage Hill	723	823	926	1023	1126	1223	1326	1423	1526	1623	1751	1848	1948	
Reach, Great Lane	728	828	--	1028	--	1228	--	1428	--	1628	--	1853	1953	
Burwell, Hawthorn Way	738	838	938	1038	1138	1238	1338	1438	1538	1638	1803	1903	2003	
Newmarket, Studland Park Centre	752	852	952	1052	1152	1252	1352	1452	1552	1652	1817	1917	2017	
Newmarket, Academy	759	859	959	1059	1159	1259	1359	1459	1559	1659	1824	1924	2024	
Newmarket, The Guineas Bus Station	802	902	1002	1102	1202	1302	1402	1502	1602	1702	1827	1927	2027	

Then and Now *(see facing page for pictures)*

The two boys fishing next to the footbridge across to the Hythe are possibly my uncles Tim and Johnathan Washtell. The photo taken around 1958-60 shows how light and clear of undergrowth the Hythe and riverbank were back then. The footbridge has been replaced many times, but I think I prefer this version.

Chris Patterson

Contact Information

Parish Council – see “Know Your Parish Council”			
Village Hall			
	Chair	David Thomas	01638 742676
	Finance	Andrew Trump	01638 743335
	Bookings	Diana Greer	rvhcb25@gmail.com
	Secretary	Sue Elliott	01638 742268
	Tents and Village Games Bookings	Claire Halpin-McDonald	01638 743330
Church			
	Vicar	Eleanor Williams	01638 741262
	Curate (Duty days Wed, Fri and Sun)	Reverend Paula Spalding	07545 868549
	Priest in Retirement	Rev David King	01638 742924
	Churchwarden	Dr Stephen Martin	01638 611235
Emergencies			
	Electricity (Eastern Electric)		0800 783 8838
	Police (Emergency)		999
	Police (Non-Emergency)		101
	Water (Anglian Water)		08457 145145
Doctors, Burwell			
	Contact Phone Numbers	01638 741234, out of hours dial 111	
	Surgery Hours	Mon to Friday, 8.30am to 6.00pm	
	Website (Surgery)	https://www.theburwellsurgery.co.uk/index.aspx	
	Website (Patient Participation Group)	https://www.theburwellsurgery.co.uk/patient-group	